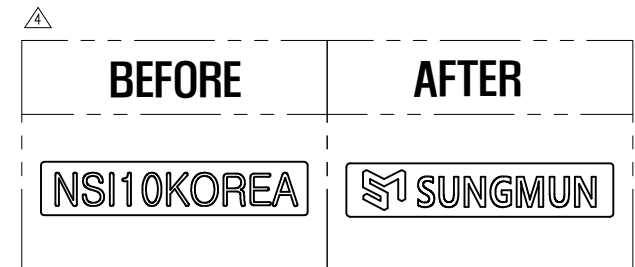
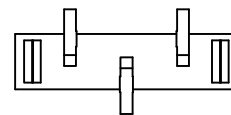
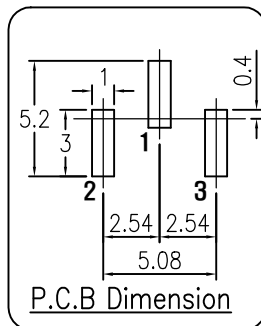
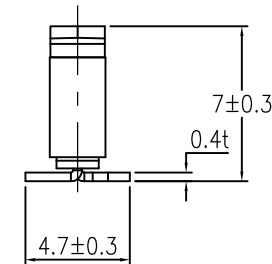
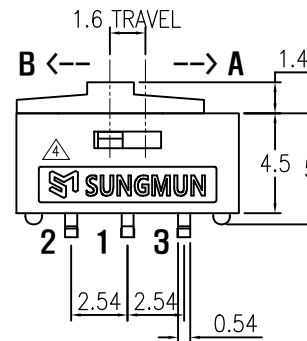
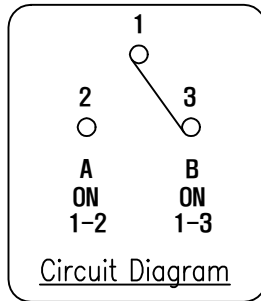
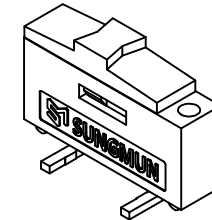
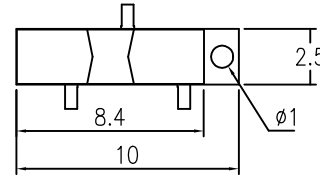


REV NO.	DATE	REVISION	DR	CH	APP
△	22.12.06	CHANGE THE MARKING	H.S LEE	K.N KIM	W.J LEE
△	23.10.13	DIN ISO-2768-1m tolerance applied	H.S LEE	K.N KIM	W.J LEE

SPECIFICATION

1. Rating : DC12V 0.5A~24V 0.3A.
2. Contact Resistance : 30mΩ Max.
3. Travel : 1.6mm.
4. Operating Force : 250gf ± 150gf.
5. Life Cycle : 2,000 Cycle (with load).
6. Packing : 200pcs Vinyl Bag / 700pcs Reel Packing



Din ISO-2768-1m					
Ranges	0.5~3	3~6	6~30	30~120	120~400
Tolerance	±0.1	±0.1	±0.2	±0.3	±0.5

DRAW/DESIGNED	CHECKED	APPROVED	G.TOL	TITLE	MODEL NO.	REV.
J.S YANG	W.J LEE	K.I LEE	±0.1	MINI SLIDE SWITCH	NSI-10S	
			UNIT	SCALE	DRAW NO.	
			mm	3:1	NSI-10S-05	05
			SIZE			
			A4			