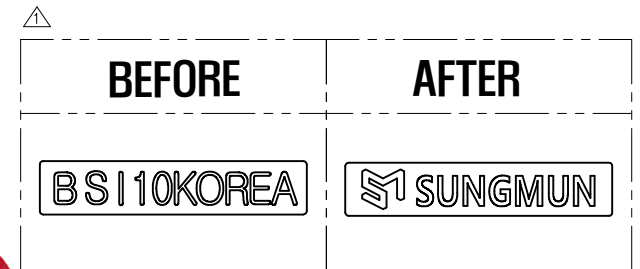
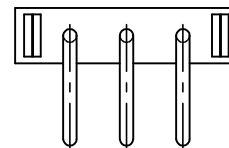
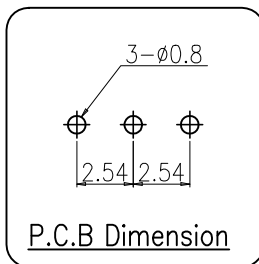
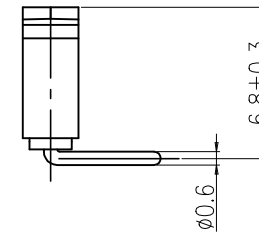
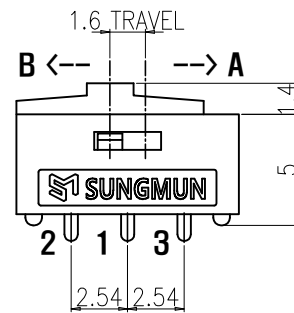
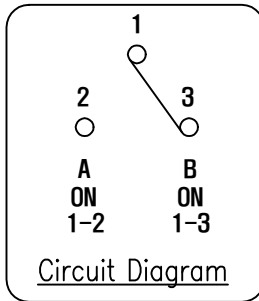
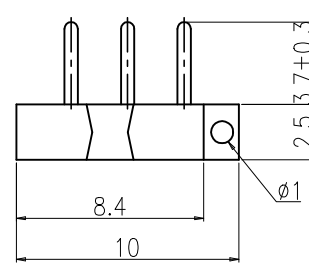


SPECIFICATION

1. Rating : DC12V 0.5A~24V 0.3A.
2. Contact Resistance : 30mΩ Max.
3. Travel : 1.6mm.
4. Operating Force : 250 ± 150gf.
5. Life Cycle : 2,000 Cycle (with load).
6. Packing : 200pcs Vinyl Bag

| REV NO. | DATE | REVISION | DR | CH | APP |
|---------|----------|---|-----------|---------|---------|
| △ | 22.09.08 | CHANGE THE MARKING | K.N KIM | W.J LEE | K.I LEE |
| △ | 22.10.05 | CHANGE THE MODEL NO | K.N KIM | W.J LEE | K.I LEE |
| △ | 23.10.13 | DIN ISO-2768-1m tolerance applied | H.S LEE | K.N KIM | W.J LEE |
| △ | 23.11.28 | Recreation of drawings for unification of drawing formats | W.R KYUNG | K.N KIM | W.J LEE |



| Din ISO-2768-1m | | | | | DRAW/DESIGNED | CHECKED | APPROVED | G.TOL | TITLE | REV. |
|-----------------|-------|------|------|--------|---------------|------------------------------|------------|------------|-------------------|--------------|
| Ranges | 0.5~3 | 3~6 | 6~30 | 30~120 | 120~400 | Y.S KIM | B.S KANG | K.I LEE | MINI SLIDE SWITCH | |
| Tolerance | ±0.1 | ±0.1 | ±0.2 | ±0.3 | ±0.5 | 2021-08-23 | 2021-08-23 | 2021-08-24 | SSI-10H △ | |
| | | | | | | SUNG MUN ELECTRONICS CO.,LTD | | | SCALE | MODEL NO. |
| | | | | | | | | | N:S | SSI-10H-04 △ |
| | | | | | | | | | SIZE | DRAW NO. |
| | | | | | | | | | A4 | 04 |