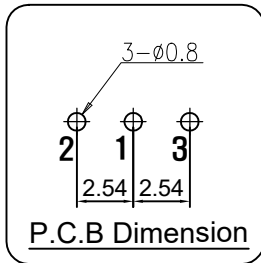
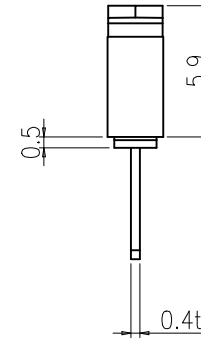
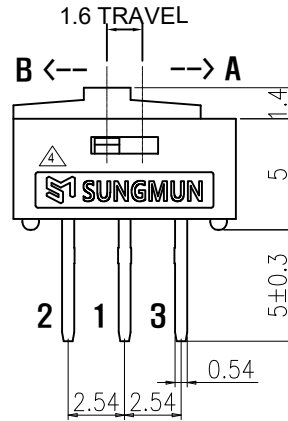
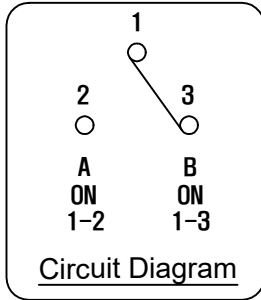
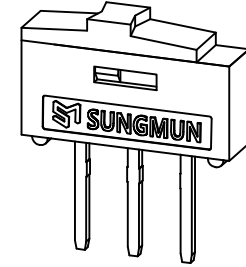
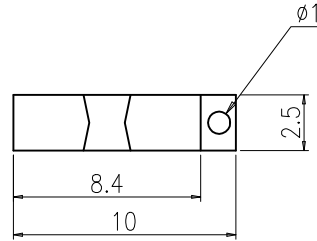


REV NO.	DATE	REVISION	DR	CH	APP
△	22.06.03	CHANGE THE MARKING	K.N KIM	W.J LEE	K.I LEE
△	23.11.23	DIN-ISO-2768-1m tolerance applied	W.R KYUNG	K.N KIM	W.J LEE

SPECIFICATION

1. Rating : DC12V 0.5A~24V 0.3A.
2. Contact Resistance : 30mΩ Max.
3. Travel : 1.6mm.
4. Operating Force : 250gf ± 150gf.
5. Life Cycle : 2,000 Cycle (with load).
6. Packing : 200pcs Vinyl Bag



△	BEFORE	AFTER
	NSI10KOREA	SUNGMUN

Din ISO-2768-1m	Draw/Designed	Checked	Approved	G.TOL	TITLE	MODEL NO.	REV.
	J.S YANG	W.J LEE	K.I LEE				
Ranges	2021-10-20	2021-10-20	2021-10-20	±0.1	SCALE	NSI-10	
Tolerance	±0.1	±0.1	±0.2	±0.3	±0.5	NSI-10-05	05